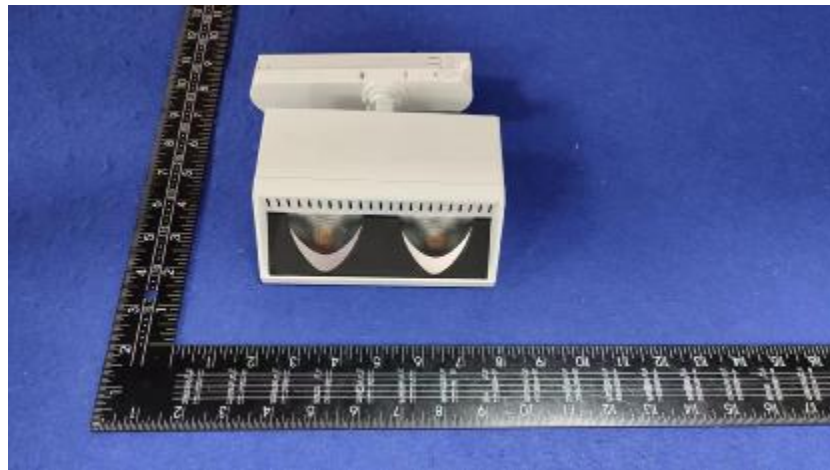


Luminaire Photograph



Light Output Ratio:	85.4%	
Luminaire Power:	27.06 W	
SHR Nominal:	0.50	Calculated using the TM5
SHR Maximum:	0.50	fine grid method.

C Range: 0 - 360DEG
C Interval: 30.0DEG
Test Speed: HIGH
Temperature: 25.3DEG
Operators: Zoe
Test Date: 2023-1-12

g Range: 0 - 180DEG
g Interval: 1.0DEG
Test System: EVERFINE GO-SPEX500_V1 SYSTEM V2.00.416
Humidity: 65.0%
Test Distance: 3.160m [K=1.0000]
Remarks: LAMP: CLU028-1204C4-303H5M3-F1 Ra: 90
REFLECTOR: AP-060C-WW
DRIVER: PRO-UA430 700mA
30minutes warm-up

LUMINOUS INTENSITY DISTRIBUTION DIAGRAM

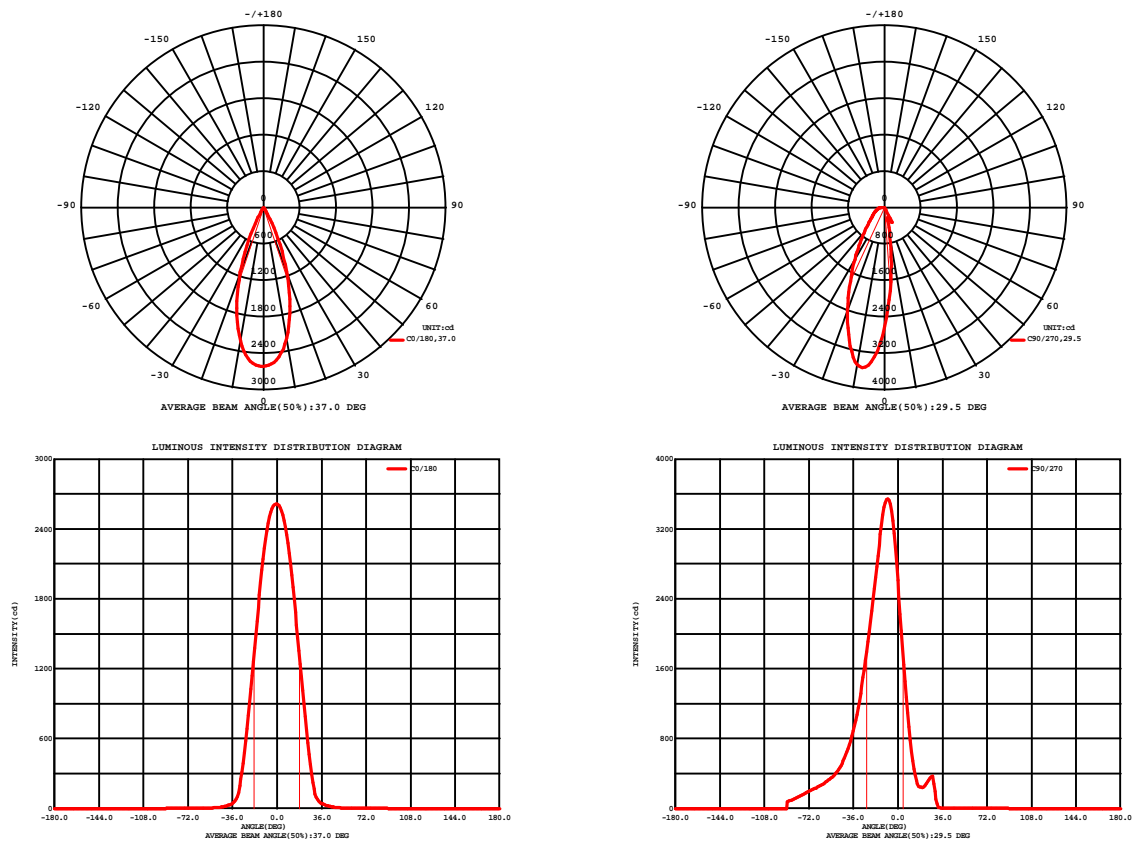


Fig. C0/C180

Fig. C90/C270

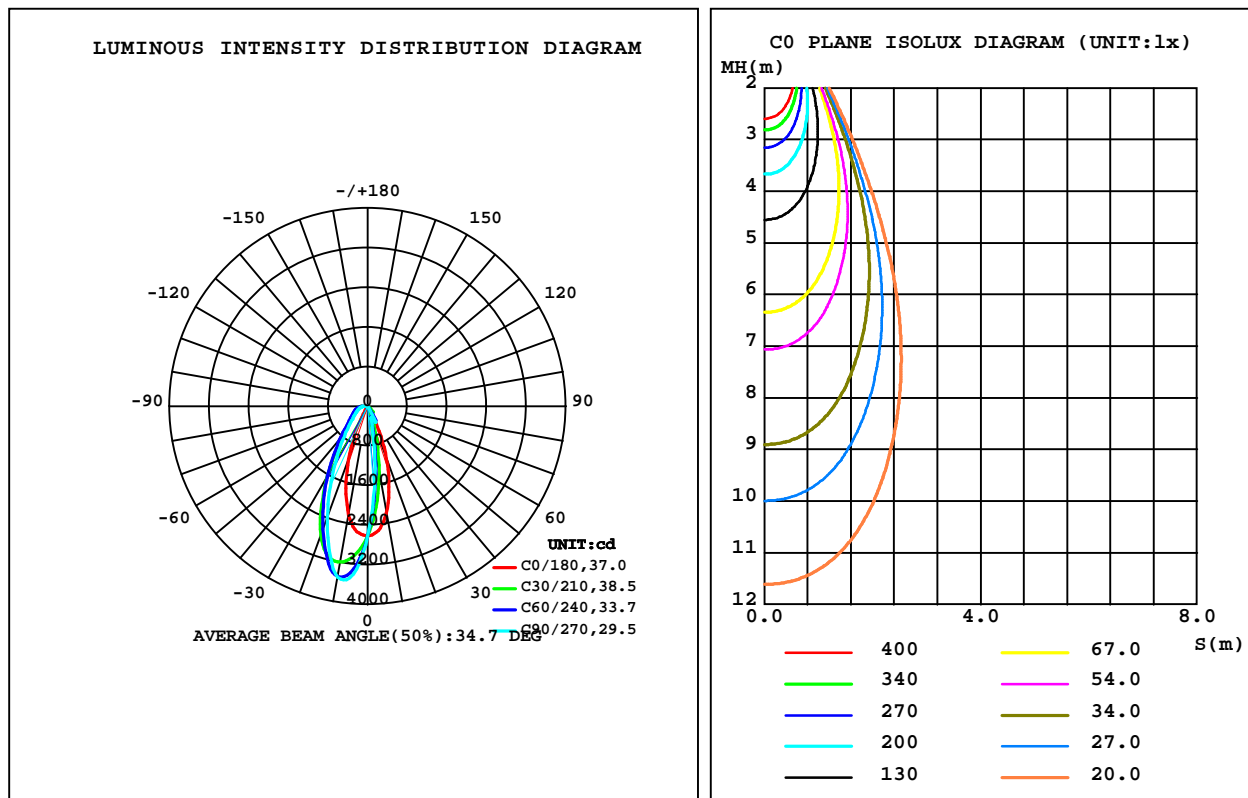
C Range: 0 - 360DEG
C Interval: 30.0DEG
Test Speed: HIGH
Temperature: 25.3DEG
Operators: Zoe
Test Date: 2023-1-12

Range: 0 - 180DEG
Interval: 1.0DEG
Test System: EVERFINE GO-SPEX500_V1 SYSTEM V2.00.416
Humidity: 65.0%
Test Distance: 3.160m [K=1.0000]
Remarks: LAMP: CLU028-1204C4-303H5M3-F1 Ra: 90
REFLECTOR: AP-060C-WW
DRIVER: PRO-UA430 700mA
30minutes warm-up

LUMINAIRE PHOTOMETRIC TEST REPORT

Test:U:220.28V I:0.1281A P:27.056W PF:0.9558 Freq:49.99Hz Lamp Flux:2614.7x1 lm		
NAME: 2219.200A	TYPE:	WEIGHT:
SPEC.:3000K	DIM.:	SERIAL No.:2301120040
MFR.: RISE	SUR.:0.005904m2	Shielding Angle:

DATA OF LAMP		PHOTOMETRIC DATA Eff: 82.50 lm/W			
MODEL	CITIZEN	Imax(cd)	3653	S/MH(C0/180)	0.59
NOMINAL POWER(W)	27	LOR(%)	85.4	S/MH(C90/270)	0.91
RATED VOLTAGE(V)	220	TOTAL FLUX(lm)	2232.1	h UP,DN(C0-180)	0.0,11.6
NOMINAL FLUX(lm)	2614.7	CIE CLASS	DIRECT	h UP,DN(C180-360)	0.0,73.7
LAMPS INSIDE	1	h up(%)	0.0	CIBSE SHR NOM	0.50
TEST VOLTAGE(V)	220	h down(%)	85.4	CIBSE SHR MAX	0.50



C Range: 0 - 360DEG
C Interval: 30.0DEG
Test Speed: HIGH
Temperature:25.3DEG
Operators:Zoe
Test Date:2023-1-12

g Range: 0 - 180DEG
Interval: 1.0DEG
Test System:EVERFINE GO-SPEX500_V1 SYSTEM V2.00.416
Humidity:65.0%
Test Distance:3.160m [K=1.0000]
Remarks: LAMP:CLU028-1204C4-303H5M3-F1 Ra:90
REFLECTOR:AP-060C-WW
DRIVER:PRO-UA430 700mA
30minutes warm-up

ZONAL FLUX DIAGRAM

ZONAL FLUX DIAGRAM:

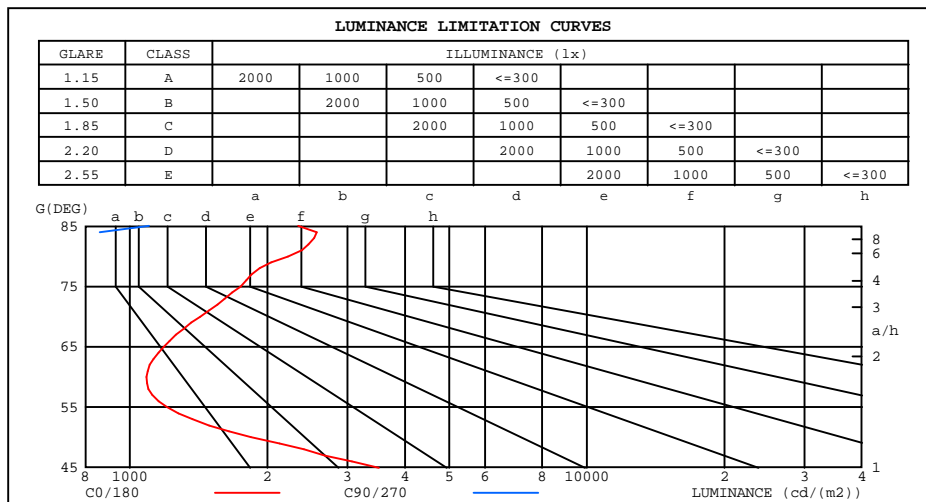
g	C0	C45	C90	C135	C180	C225	C270	C315	g	F zone	F total	%lum,lamp
10	2191	1132	779.6	1085	2232	3339	3499	3476	0- 10	231.6	231.6	10.4,8.86
20	1127	291.5	238.2	280.2	1143	2709	2389	2876	10- 20	505.9	737.5	33,28.2
30	167.9	209.9	194.7	248.7	193.1	1627	1315	1725	20- 30	495.3	1233	55.2,47.1
40	27.09	78.21	1.021	105.8	24.49	850.1	684.6	888.2	30- 40	339.2	1572	70.4,60.1
50	6.779	24.42	0.1472	2.457	6.148	488.8	404.0	519.0	40- 50	219.9	1792	80.3,68.5
60	3.109	0.5003	0.0851	0.4491	3.317	333.5	282.8	368.3	50- 60	150.1	1942	87,74.3
70	2.789	0.1857	0.1820	0.2250	2.756	252.7	206.7	292.7	60- 70	121.2	2063	92.4,78.9
80	2.207	0.4606	0.4147	0.5490	1.776	189.9	136.3	229.7	70- 80	100.1	2163	96.9,82.7
90	0	0	0	0	0	0	0	0	80- 90	68.67	2232	100,85.4
100	0	0	0	0	0	0	0	0	90-100	0	2232	100,85.4
110	0	0	0	0	0	0	0	0	100-110	0	2232	100,85.4
120	0	0	0	0	0	0	0	0	110-120	0	2232	100,85.4
130	0	0	0	0	0	0	0	0	120-130	0	2232	100,85.4
140	0	0	0	0	0	0	0	0	130-140	0	2232	100,85.4
150	0	0	0	0	0	0	0	0	140-150	0	2232	100,85.4
160	0	0	0	0	0	0	0	0	150-160	0	2232	100,85.4
170	0	0	0	0	0	0	0	0	160-170	0	2232	100,85.4
180	0	0	0	0	0	0	0	0	170-180	0	2232	100,85.4
DEG	LUMINOUS INTENSITY:cd									UNIT:lm		

C Range: 0 - 360DEG
C Interval: 30.0DEG
Test Speed: HIGH
Temperature:25.3DEG
Operators:Zoe
Test Date:2023-1-12

g Range: 0 - 180DEG
Interval: 1.0DEG
Test System:EVERFINE GO-SPEX500_V1 SYSTEM V2.00.416
Humidity:65.0%
Test Distance:3.160m [K=1.0000]
Remarks: LAMP:CLU028-1204C4-303H5M3-F1 Ra:90
REFLECTOR:AP-060C-WW
DRIVER:PRO-UA430 700mA
30minutes warm-up

LUMINANCE LIMITATION CURVES

Test:U:220.28V I:0.1281A P:27.056W PF:0.9558 Freq:49.99Hz Lamp Flux:2614.7x1 lm		
NAME: 2219.200A	TYPE:	WEIGHT:
SPEC.:3000K	DIM.:	SERIAL No.:2301120040
MFR.: RISE	SUR.:0.005904m2	Shielding Angle:



LUMINANCE cd/(m2)		
G(180)	C0/180	C90/270
85	2335	1103
80	2222	407
75	1748	183
70	1426	91
65	1186	48
60	1087	29
55	1207	24
50	1844	39
45	3509	164

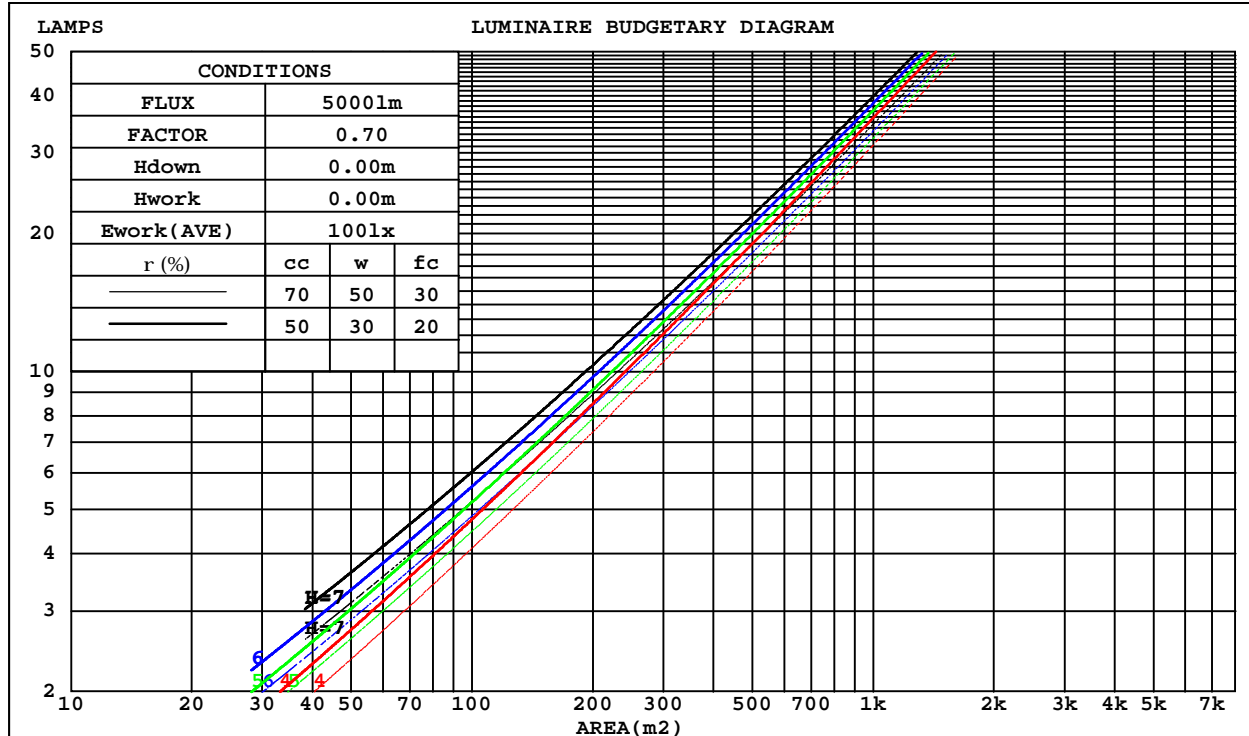
C Range: 0 - 360DEG
C Interval: 30.0DEG
Test Speed: HIGH
Temperature:25.3DEG
Operators:Zoe
Test Date:2023-1-12

G Range: 0 - 180DEG
G Interval: 1.0DEG
Test System:EVERFINE GO-SPEX500_V1 SYSTEM V2.00.416
Humidity:65.0%
Test Distance:3.160m [K=1.0000]
Remarks: LAMP:CLU028-1204C4-303H5M3-F1 Ra:90
REFLECTOR:AP-060C-WW
DRIVER:PRO-UA430 700mA
30minutes warm-up

CU AND LUMINAIRE BUDGETARY ESTIMATE DIAGRAM

Test:U:220.28V I:0.1281A P:27.056W PF:0.9558 Freq:49.99Hz Lamp Flux:2614.7x1 lm		
NAME: 2219.200A	TYPE:	WEIGHT:
SPEC.:3000K	DIM.:	SERIAL No.:2301120040
MFR.: RISE	SUR.:0.005904m2	Shielding Angle:

rcc	80%			70%			50%			30%			10%			0
rw	50%	30%	10%	50%	30%	10%	50%	30%	10%	50%	30%	10%	50%	30%	10%	0
r fc	20%			20%			20%			20%			20%			0
RCR	RCR:Room Cavity Ratio Coefficients of Utilization(CU)															
0.0	1.02	1.02	1.02	.99	.99	.99	.95	.95	.95	.91	.91	.91	.87	.87	.87	.85
1.0	.91	.88	.85	.89	.86	.84	.85	.83	.81	.82	.80	.79	.79	.78	.76	.75
2.0	.82	.78	.74	.81	.77	.73	.78	.74	.71	.75	.72	.70	.73	.70	.68	.66
3.0	.75	.70	.65	.74	.69	.65	.72	.67	.64	.69	.66	.63	.67	.64	.62	.60
4.0	.69	.63	.59	.68	.63	.58	.66	.61	.58	.64	.60	.57	.63	.59	.56	.55
5.0	.64	.58	.53	.63	.57	.53	.62	.56	.53	.60	.56	.52	.59	.55	.52	.50
6.0	.60	.53	.49	.59	.53	.49	.57	.52	.48	.56	.52	.48	.55	.51	.48	.46
7.0	.56	.50	.45	.55	.49	.45	.54	.49	.45	.53	.48	.45	.52	.48	.44	.43
8.0	.52	.46	.42	.52	.46	.42	.51	.46	.42	.50	.45	.42	.49	.45	.42	.40
9.0	.49	.43	.39	.49	.43	.39	.48	.43	.39	.47	.42	.39	.46	.42	.39	.38
10.0	.46	.41	.37	.46	.41	.37	.45	.40	.37	.45	.40	.37	.44	.40	.37	.35



C Range: 0 - 360DEG
C Interval: 30.0DEG
Test Speed: HIGH
Temperature:25.3DEG
Operators:Zoe
Test Date:2023-1-12

g Range: 0 - 180DEG
Interval: 1.0DEG
Test System:EVERFINE GO-SPEX500_V1 SYSTEM V2.00.416
Humidity:65.0%
Test Distance:3.160m [K=1.0000]
Remarks: LAMP:CLU028-1204C4-303H5M3-F1 Ra:90
REFLECTOR:AP-060C-WW
DRIVER:PRO-UA430 700mA
30minutes warm-up

WEC AND CCEC

Test:U:220.28V I:0.1281A P:27.056W PF:0.9558 Freq:49.99Hz Lamp Flux:2614.7x1 lm		
NAME: 2219.200A	TYPE:	WEIGHT:
SPEC.:3000K	DIM.:	SERIAL No.:2301120040
MFR.: RISE	SUR.:0.005904m2	Shielding Angle:

rcc	80%			70%			50%			30%			10%			0
rw	50%	30%	10%	50%	30%	10%	50%	30%	10%	50%	30%	10%	50%	30%	10%	0
rfc	20%			20%			20%			20%			20%			0
RCR	RCR:Room Cavity Ratio Wall Exitance Coefficients(WEC)															
0.0																
1.0	.221	.126	.040	.215	.123	.039	.204	.117	.037	.194	.112	.036	.184	.107	.034	
2.0	.200	.109	.034	.194	.107	.033	.185	.103	.032	.176	.099	.031	.168	.095	.030	
3.0	.183	.097	.029	.178	.095	.029	.170	.092	.028	.162	.089	.027	.155	.086	.027	
4.0	.168	.087	.026	.165	.086	.025	.157	.083	.025	.151	.081	.024	.144	.078	.024	
5.0	.156	.080	.023	.153	.078	.023	.147	.076	.022	.141	.074	.022	.135	.072	.022	
6.0	.146	.073	.021	.143	.072	.021	.137	.070	.020	.132	.069	.020	.127	.067	.020	
7.0	.137	.068	.019	.134	.067	.019	.129	.065	.019	.125	.064	.019	.120	.062	.018	
8.0	.129	.063	.018	.126	.062	.018	.122	.061	.017	.118	.060	.017	.114	.058	.017	
9.0	.121	.059	.016	.119	.058	.016	.115	.057	.016	.112	.056	.016	.108	.055	.016	
10.0	.115	.055	.015	.113	.055	.015	.110	.054	.015	.106	.053	.015	.103	.052	.015	

rcc	80%			70%			50%			30%			10%			0
rw	50%	30%	10%	50%	30%	10%	50%	30%	10%	50%	30%	10%	50%	30%	10%	0
rfc	20%			20%			20%			20%			20%			0
RCR	RCR:Room Cavity Ratio						Ceiling Cavity Exitance Coefficients(CCEC)									
0.0	.163	.163	.163	.139	.139	.139	.095	.095	.095	.054	.054	.054	.017	.017	.017	
1.0	.151	.134	.118	.129	.115	.102	.088	.079	.070	.051	.046	.041	.016	.015	.013	
2.0	.140	.113	.090	.120	.097	.078	.082	.067	.054	.048	.039	.032	.015	.013	.010	
3.0	.131	.097	.070	.112	.084	.061	.077	.058	.043	.045	.034	.025	.014	.011	.008	
4.0	.123	.085	.056	.106	.074	.049	.073	.051	.034	.042	.030	.020	.014	.010	.007	
5.0	.116	.076	.046	.099	.066	.040	.068	.046	.028	.040	.027	.017	.013	.009	.006	
6.0	.109	.068	.039	.094	.059	.034	.065	.041	.024	.038	.024	.014	.012	.008	.005	
7.0	.103	.062	.033	.089	.054	.029	.061	.038	.020	.036	.022	.012	.012	.007	.004	
8.0	.098	.057	.028	.084	.049	.025	.058	.034	.018	.034	.020	.010	.011	.007	.003	
9.0	.093	.052	.025	.080	.045	.022	.055	.032	.015	.032	.019	.009	.010	.006	.003	
10.0	.088	.048	.022	.076	.042	.019	.053	.030	.014	.031	.017	.008	.010	.006	.003	

C Range: 0 - 360DEG
C Interval: 30.0DEG
Test Speed: HIGH
Temperature:25.3DEG
Operators:Zoe
Test Date:2023-1-12

g Range: 0 - 180DEG
g Interval: 1.0DEG
Test System:EVERFINE GO-SPEX500_V1 SYSTEM V2.00.416
Humidity:65.0%
Test Distance:3.160m [K=1.0000]
Remarks: LAMP:CLU028-1204C4-303H5M3-F1 Ra:90
REFLECTOR:AP-060C-WW
DRIVER:PRO-UA430 700mA
30minutes warm-up

UGR(Unified Glare Rating) Table

Test:U:220.28V I:0.1281A P:27.056W PF:0.9558 Freq:49.99Hz Lamp Flux:2614.7x1 lm										
NAME: 2219.200A					TYPE:			WEIGHT:		
SPEC.:3000K					DIM.:			SERIAL No.:2301120040		
MFR.: RISE					SUR.:0.005904m2			Shielding Angle:		
ceiling/cavity	0.7	0.7	0.5	0.5	0.3	0.7	0.7	0.5	0.5	0.3
walls	0.5	0.3	0.5	0.3	0.3	0.5	0.3	0.5	0.3	0.3
working plane	0.2	0.2	0.2	0.2	0.2	0.2	0.2	0.2	0.2	0.2
Room dimensions	Viewed crosswise					Viewed endwise				
x = 2H y = 2H	11.8	13.0	12.0	13.2	13.3	7.7	8.9	8.0	9.1	9.3
3H	11.6	12.7	11.9	12.9	13.2	7.5	8.6	7.8	8.8	9.0
4H	11.6	12.6	11.9	12.8	13.1	7.4	8.5	7.7	8.7	8.9
6H	11.5	12.5	11.8	12.8	13.0	7.3	8.3	7.6	8.6	8.8
8H	11.5	12.5	11.8	12.7	13.0	7.3	8.2	7.6	8.5	8.8
12H	11.5	12.4	11.9	12.7	13.0	7.3	8.2	7.6	8.5	8.8
4H 2H	11.5	12.5	11.8	12.8	13.0	7.4	8.5	7.7	8.7	8.9
3H	11.3	12.2	11.7	12.5	12.8	7.2	8.1	7.6	8.4	8.7
4H	11.3	12.1	11.6	12.4	12.7	7.1	8.0	7.5	8.3	8.6
6H	11.2	12.0	11.6	12.3	12.7	7.0	7.8	7.4	8.1	8.5
8H	11.3	12.0	11.7	12.3	12.7	7.0	7.7	7.4	8.1	8.5
12H	11.3	12.0	11.7	12.3	12.7	7.0	7.7	7.4	8.0	8.4
8H 4H	11.1	11.8	11.5	12.2	12.6	7.0	7.7	7.4	8.0	8.4
6H	11.1	11.7	11.5	12.1	12.5	6.9	7.5	7.3	7.9	8.3
8H	11.1	11.7	11.6	12.1	12.5	6.9	7.4	7.4	7.9	8.3
12H	11.2	11.7	11.7	12.1	12.6	7.0	7.4	7.4	7.9	8.3
12H 4H	11.1	11.7	11.5	12.1	12.5	6.9	7.6	7.3	8.0	8.4
6H	11.1	11.6	11.5	12.0	12.5	6.9	7.4	7.3	7.8	8.3
8H	11.1	11.6	11.6	12.0	12.5	6.9	7.3	7.4	7.8	8.3
Variations with the observer position at spacings:										
S = 1.0H	+ 5.4 / - 9.3					+ 4.1 / - 8.5				
1.5H	+ 4.2 / -10.7					+ 9.2 / - 8.8				
2.0H	+ 7.0 / - 8.5					+ 0.5 / - 0.5				

CIE Pub.117, 2615 lm Total Lamp Luminous Flux Corrected ($8\log(F/F_0) = 3.3$)
Area: 0.005904 m2

C Range: 0 - 360DEG
C Interval: 30.0DEG
Test Speed: HIGH
Temperature:25.3DEG
Operators:Zoe
Test Date:2023-1-12

g Range: 0 - 180DEG
g Interval: 1.0DEG
Test System:EVERFINE GO-SPEX500_V1 SYSTEM V2.00.416
Humidity:65.0%
Test Distance:3.160m [K=1.0000]
Remarks: LAMP:CLU028-1204C4-303H5M3-F1 Ra:90
REFLECTOR:AP-060C-WW
DRIVER:PRO-UA430 700mA
30minutes warm-up

UTILIZATION FACTORS TABLE

Test:U:220.28V I:0.1281A P:27.056W PF:0.9558 Freq:49.99Hz Lamp Flux:2614.7x1 lm		
NAME: 2219.200A	TYPE:	WEIGHT:
SPEC.:3000K	DIM.:	SERIAL No.:2301120040
MFR.: RISE	SUR.:0.005904m2	Shielding Angle:

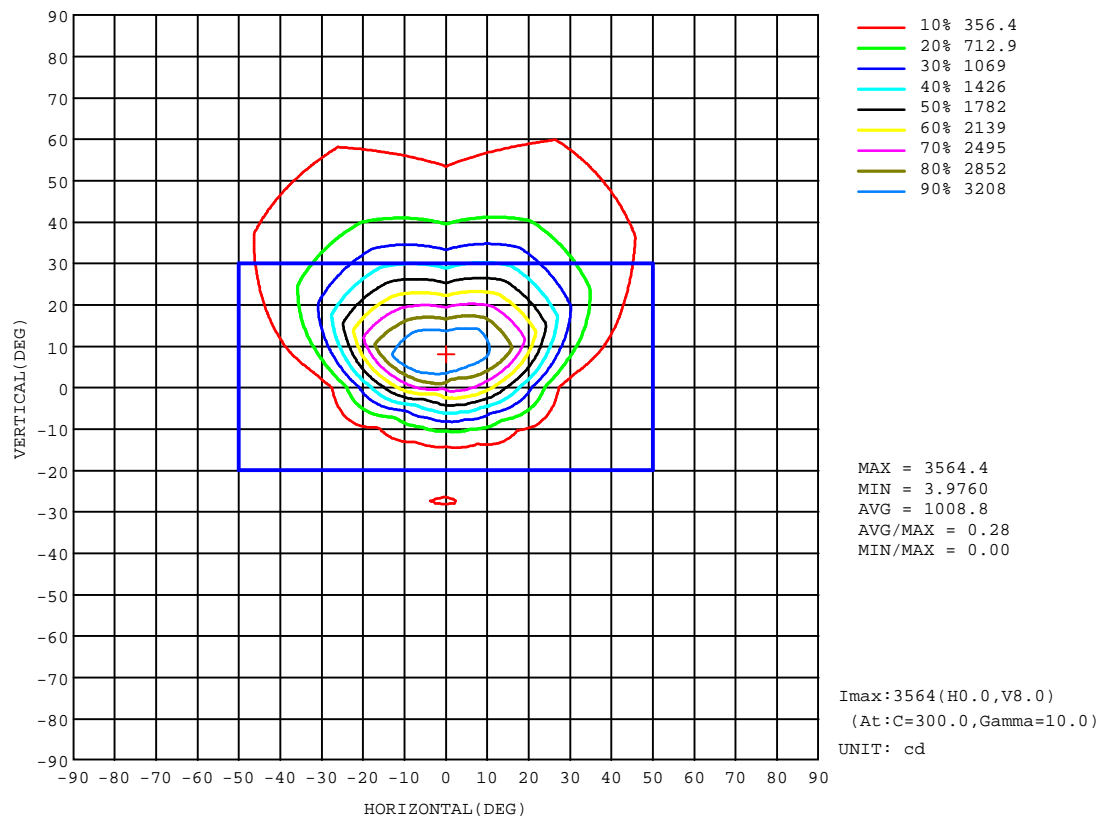
REFLECTANCE										
Ceiling	0.8	0.8	0.8	0.7	0.7	0.7	0.5	0.5	0.5	0
Walls	0.7	0.5	0.3	0.7	0.5	0.3	0.7	0.5	0.3	0
Working plane	0.2	0.2	0.2	0.2	0.2	0.2	0.2	0.2	0.2	0
ROOM INDEX	UTILIZATION FACTORS(PERCENT) $k(RI) \times RCR = 5$									
k = 0.60	63	55	51	62	55	51	61	55	51	46
0.80	70	63	58	69	62	58	68	62	58	53
1.00	75	68	63	74	68	63	73	68	63	58
1.25	79	73	68	78	72	68	76	71	67	62
1.50	83	76	72	81	76	71	79	74	71	65
2.00	86	81	77	85	80	76	82	78	75	69
2.50	89	84	80	87	82	79	84	80	77	71
3.00	91	86	82	89	85	82	86	82	80	73
4.00	93	89	86	91	88	85	88	85	83	76
5.00	95	92	89	93	90	88	89	87	85	78
ROOM INDEX	UF(total)									Direct
According to DIN EN 13032-2 2004			Suspended					SHRNOM = 1.25		

C Range: 0 - 360DEG
 C Interval: 30.0DEG
 Test Speed: HIGH
 Temperature:25.3DEG
 Operators:Zoe
 Test Date:2023-1-12

g Range: 0 - 180DEG
 g Interval: 1.0DEG
 Test System:EVERFINE GO-SPEX500_V1 SYSTEM V2.00.416
 Humidity:65.0%
 Test Distance:3.160m [K=1.0000]
 Remarks: LAMP:CLU028-1204C4-303H5M3-F1 Ra:90
 REFLECTOR:AP-060C-WW
 DRIVER:PRO-UA430 700mA
 30minutes warm-up

ISOCANDELA DIAGRAM

Test:U:220.28V I:0.1281A P:27.056W PF:0.9558 Freq:49.99Hz Lamp Flux:2614.7x1 lm		
NAME: 2219.200A	TYPE:	WEIGHT:
SPEC.:3000K	DIM.:	SERIAL No.:2301120040
MFR.: RISE	SUR.:0.005904m2	Shielding Angle:

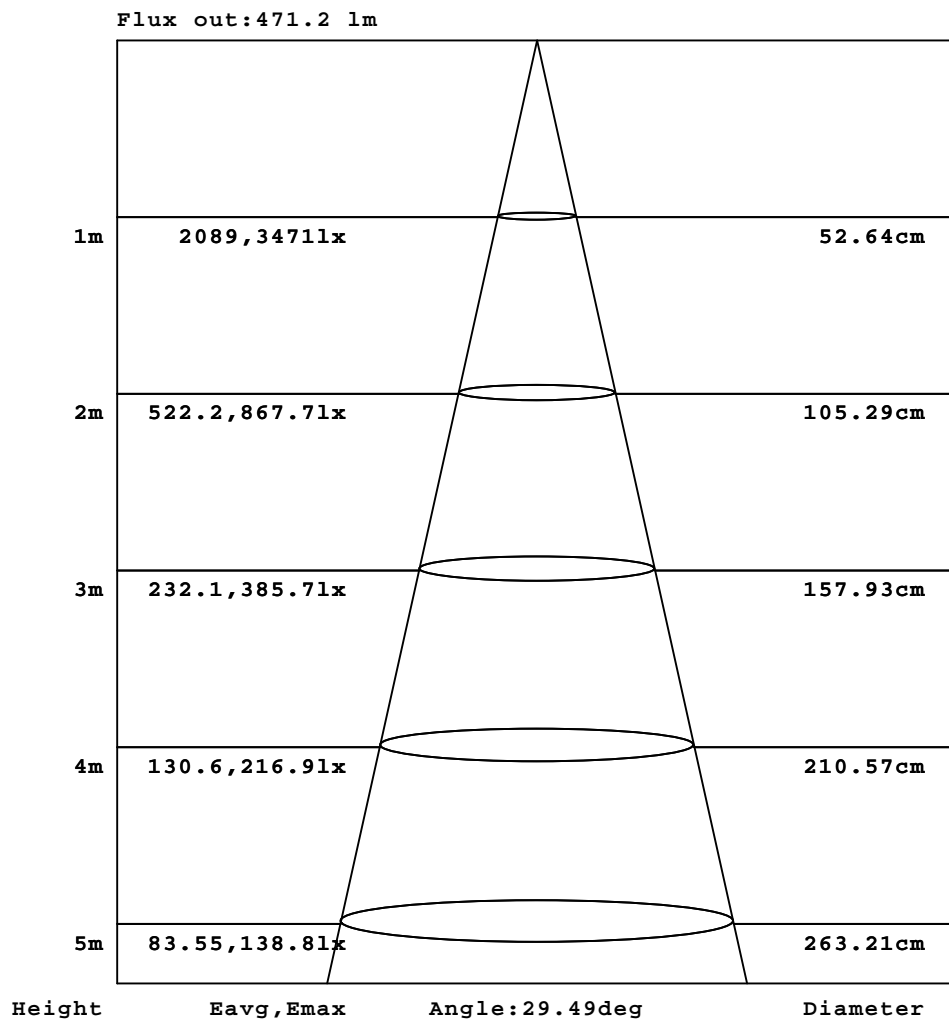


C Range: 0 - 360DEG
C Interval: 30.0DEG
Test Speed: HIGH
Temperature:25.3DEG
Operators:Zoe
Test Date:2023-1-12

g Range: 0 - 180DEG
Interval: 1.0DEG
Test System:EVERFINE GO-SPEX500_V1 SYSTEM V2.00.416
Humidity:65.0%
Test Distance:3.160m [K=1.0000]
Remarks: LAMP:CLU028-1204C4-303H5M3-F1 Ra:90
REFLECTOR:AP-060C-WW
DRIVER:PRO-UA430 700mA
30minutes warm-up

AAI Figure

Test:U:220.28V I:0.1281A P:27.056W PF:0.9558 Freq:49.99Hz Lamp Flux:2614.7x1 lm		
NAME: 2219.200A	TYPE:	WEIGHT:
SPEC.:3000K	DIM.:	SERIAL No.:2301120040
MFR.: RISE	SUR.:0.005904m2	Shielding Angle:



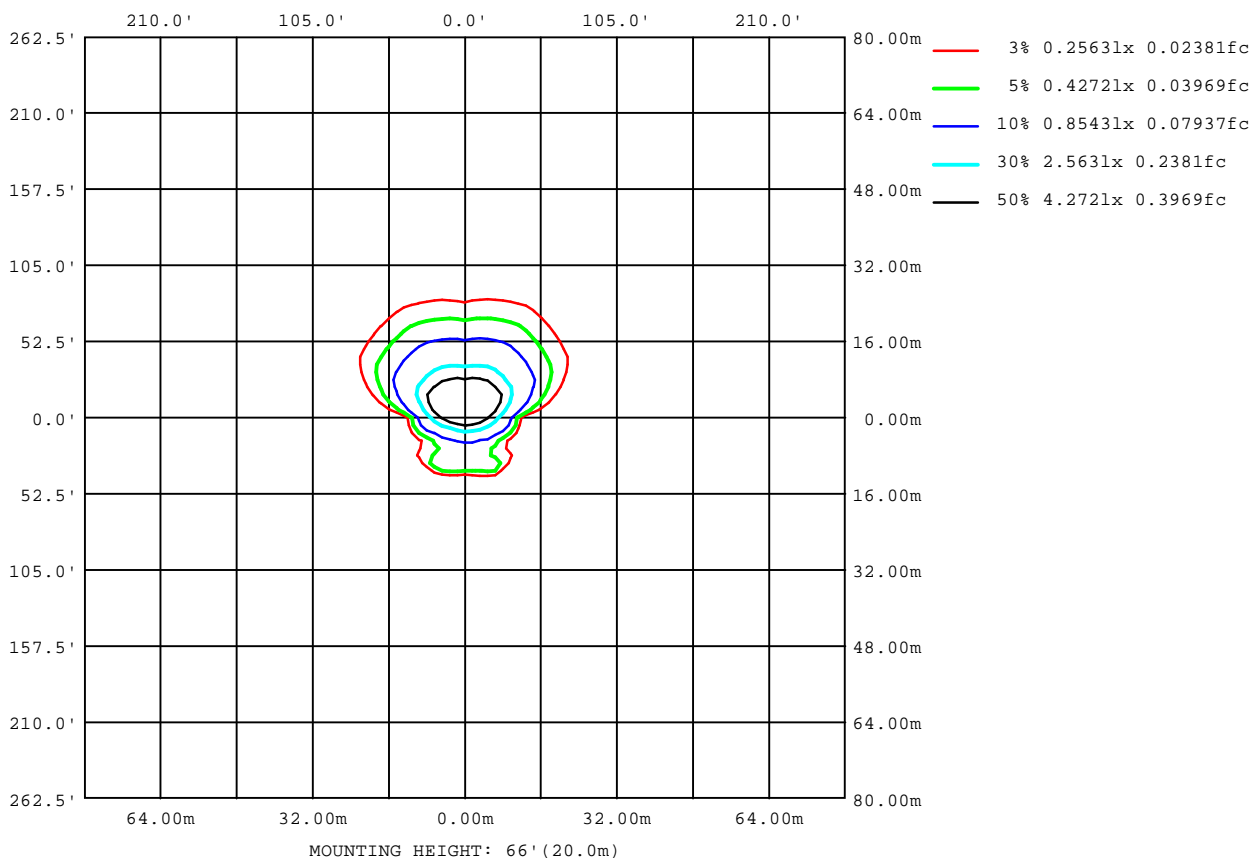
Note:The Curves indicate the illuminated area and the average illumination when the luminaire is at different distance.

C Range: 0 - 360DEG
C Interval: 30.0DEG
Test Speed: HIGH
Temperature:25.3DEG
Operators:Zoe
Test Date:2023-1-12

g Range: 0 - 180DEG
Interval: 1.0DEG
Test System:EVERFINE GO-SPEX500_V1 SYSTEM V2.00.416
Humidity:65.0%
Test Distance:3.160m [K=1.0000]
Remarks: LAMP:CLU028-1204C4-303H5M3-F1 Ra:90
REFLECTOR:AP-060C-WW
DRIVER:PRO-UA430 700mA
30minutes warm-up

ISOLUX DIAGRAM

Test:U:220.28V I:0.1281A P:27.056W PF:0.9558 Freq:49.99Hz Lamp Flux:2614.7x1 lm		
NAME: 2219.200A	TYPE:	WEIGHT:
SPEC.:3000K	DIM.:	SERIAL No.:2301120040
MFR.: RISE	SUR.:0.005904m2	Shielding Angle:



C Range: 0 - 360DEG
C Interval: 30.0DEG
Test Speed: HIGH
Temperature:25.3DEG
Operators:Zoe
Test Date:2023-1-12

g Range: 0 - 180DEG
g Interval: 1.0DEG
Test System:EVERFINE GO-SPEX500_V1 SYSTEM V2.00.416
Humidity:65.0%
Test Distance:3.160m [K=1.0000]
Remarks: LAMP:CLU028-1204C4-303H5M3-F1 Ra:90
REFLECTOR:AP-060C-WW
DRIVER:PRO-UA430 700mA
30minutes warm-up

LED Avg.L Report

Test:U:220.28V I:0.1281A P:27.056W PF:0.9558 Freq:49.99Hz Lamp Flux:2614.7x1 lm		
NAME: 2219.200A	TYPE:	WEIGHT:
SPEC.:3000K	DIM.:	SERIAL No.:2301120040
MFR.: RISE	SUR.:0.005904m2	Shielding Angle:

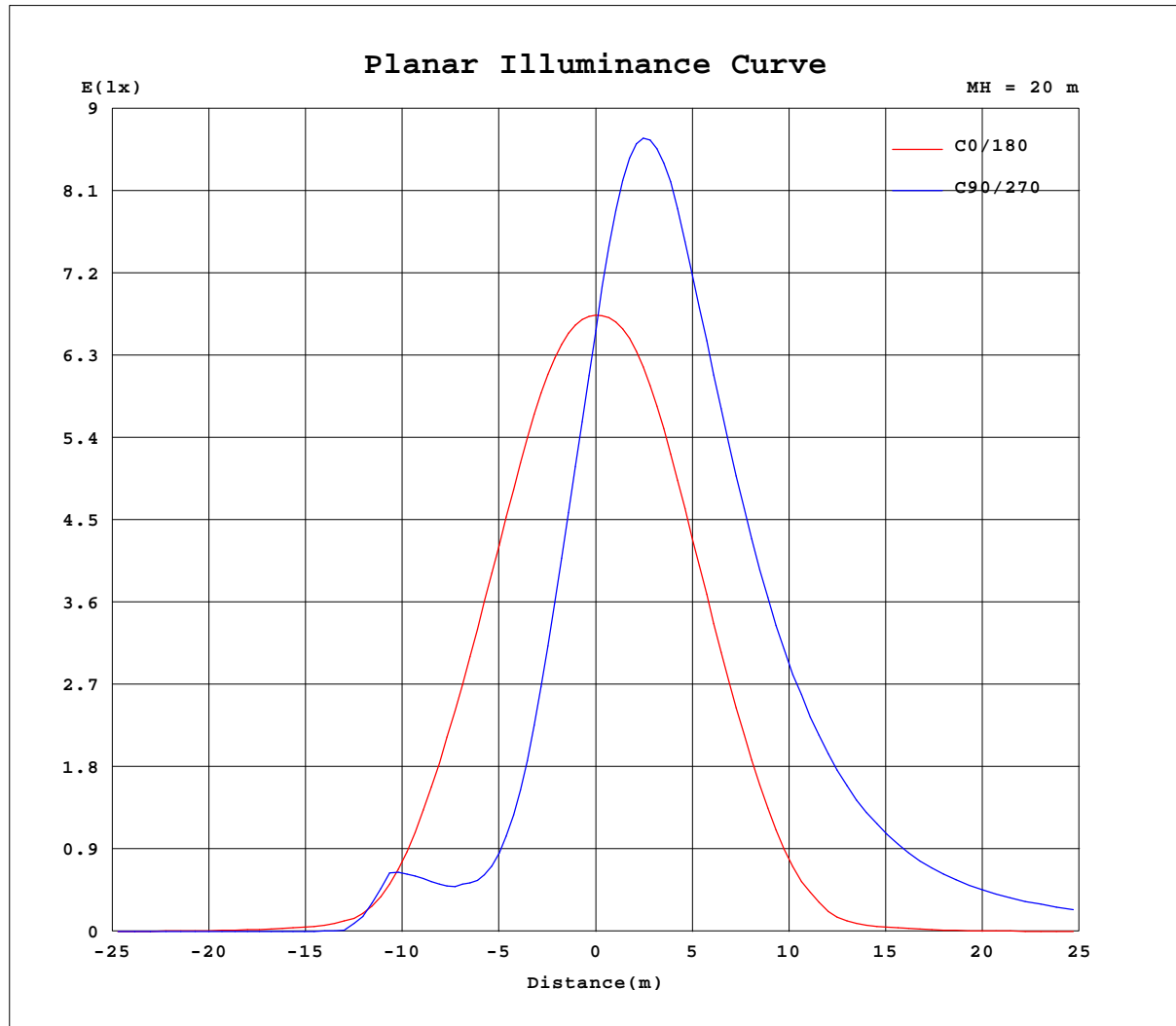
AvgL	cd/m2
L_0~180(65)av	1165
L_0~180(75)av	1600
L_0~180(85)av	2047
L_90~270(65)av	48486
L_90~270(75)av	57043
L_90~270(85)av	98173
L_45(65)av	66065
L_45(75)av	86079
L_45(85)av	184103

Standard: GB/T 29293-2012

C Range: 0 - 360DEG
C Interval: 30.0DEG
Test Speed: HIGH
Temperature:25.3DEG
Operators:Zoe
Test Date:2023-1-12

g Range: 0 - 180DEG
Interval: 1.0DEG
Test System:EVERFINE GO-SPEX500_V1 SYSTEM V2.00.416
Humidity:65.0%
Test Distance:3.160m [K=1.0000]
Remarks: LAMP:CLU028-1204C4-303H5M3-F1 Ra:90
REFLECTOR:AP-060C-WW
DRIVER:PRO-UA430 700mA
30minutes warm-up

Planar Illuminance Curve



C Range: 0 - 360DEG
 C Interval: 30.0DEG
 Test Speed: HIGH
 Temperature: 25.3DEG
 Operators: Zoe
 Test Date: 2023-1-12

g Range: 0 - 180DEG
 g Interval: 1.0DEG
 Test System: EVERFINE GO-SPEX500_V1 SYSTEM V2.00.416
 Humidity: 65.0%
 Test Distance: 3.160m [K=1.0000]
 Remarks: LAMP: CLU028-1204C4-303H5M3-F1 Ra:90
 REFLECTOR: AP-060C-WW
 DRIVER: PRO-UA430 700mA
 30minutes warm-up



LUMINOUS DISTRIBUTION INTENSITY DATA

Test:U:220.28V I:0.1281A P:27.056W PF:0.9558 Freq:49.99Hz Lamp Flux:2614.7x1 lm		
NAME: 2219.200A	TYPE:	WEIGHT:
SPEC.:3000K	DIM.:	SERIAL No.:2301120040
MFR.: RISE	SUR.:0.005904m2	Shielding Angle:

Table--1

UNIT: cd

C(°) g (°)	0	30	60	90	120	150	180	210	240	270	300	330						
0	2613	2613	2613	2613	2613	2613	2613	2613	2613	2613	2613	2613						
5	2517	2047	1734	1644	1713	2003	2543	3014	3299	3402	3370	3057						
10	2191	1356	906	780	889	1287	2232	3194	3486	3499	3653	3293						
15	1686	755	387	316	372	689	1720	3124	3182	3012	3413	3257						
20	1127	357	226	238	243	318	1143	2767	2650	2389	2857	2895						
25	565	154	235	324	271	158	580	2203	2117	1789	2280	2316						
30	168	97.6	323	195	365	129	193	1626	1627	1315	1753	1696						
35	50.3	114	101	7.29	81.2	165	51.1	1145	1211	946	1301	1180						
40	27.1	151	4.83	1.02	1.72	213	24.5	814	886	685	950	825						
45	14.2	155	1.08	0.68	1.07	170	11.5	596	659	516	709	606						
50	6.78	48.1	0.53	0.15	0.47	4.51	6.15	460	518	404	564	473						
55	3.96	2.67	0.11	0.08	0.10	1.22	4.23	370	427	334	470	390						
60	3.11	0.90	0.09	0.09	0.10	0.81	3.32	302	365	283	402	334						
65	2.87	0.41	0.14	0.12	0.14	0.32	2.95	253	322	242	352	296						
70	2.79	0.16	0.21	0.18	0.21	0.24	2.76	217	288	207	313	272						
75	2.59	0.26	0.34	0.28	0.35	0.37	2.30	193	252	174	272	254						
80	2.21	0.40	0.52	0.41	0.54	0.55	1.78	177	203	136	217	243						
85	1.16	0.55	0.74	0.56	0.78	0.76	0.94	159	152	100	158	224						
90	0.00	0.00	0.00	0.00	0.00	0.00	0.00	0.00	0.00	0.00	0.00	0.00						
95	0.00	0.00	0.00	0.00	0.00	0.00	0.00	0.00	0.00	0.00	0.00	0.00						
100	0.00	0.00	0.00	0.00	0.00	0.00	0.00	0.00	0.00	0.00	0.00	0.00						
105	0.00	0.00	0.00	0.00	0.00	0.00	0.00	0.00	0.00	0.00	0.00	0.00						
110	0.00	0.00	0.00	0.00	0.00	0.00	0.00	0.00	0.00	0.00	0.00	0.00						
115	0.00	0.00	0.00	0.00	0.00	0.00	0.00	0.00	0.00	0.00	0.00	0.00						
120	0.00	0.00	0.00	0.00	0.00	0.00	0.00	0.00	0.00	0.00	0.00	0.00						
125	0.00	0.00	0.00	0.00	0.00	0.00	0.00	0.00	0.00	0.00	0.00	0.00						
130	0.00	0.00	0.00	0.00	0.00	0.00	0.00	0.00	0.00	0.00	0.00	0.00						
135	0.00	0.00	0.00	0.00	0.00	0.00	0.00	0.00	0.00	0.00	0.00	0.00						
140	0.00	0.00	0.00	0.00	0.00	0.00	0.00	0.00	0.00	0.00	0.00	0.00						
145	0.00	0.00	0.00	0.00	0.00	0.00	0.00	0.00	0.00	0.00	0.00	0.00						
150	0.00	0.00	0.00	0.00	0.00	0.00	0.00	0.00	0.00	0.00	0.00	0.00						
155	0.00	0.00	0.00	0.00	0.00	0.00	0.00	0.00	0.00	0.00	0.00	0.00						
160	0.00	0.00	0.00	0.00	0.00	0.00	0.00	0.00	0.00	0.00	0.00	0.00						
165	0.00	0.00	0.00	0.00	0.00	0.00	0.00	0.00	0.00	0.00	0.00	0.00						
170	0.00	0.00	0.00	0.00	0.00	0.00	0.00	0.00	0.00	0.00	0.00	0.00						
175	0.00	0.00	0.00	0.00	0.00	0.00	0.00	0.00	0.00	0.00	0.00	0.00						
180	0.00	0.00	0.00	0.00	0.00	0.00	0.00	0.00	0.00	0.00	0.00	0.00						

C Range: 0 - 360DEG
C Interval: 30.0DEG
Test Speed: HIGH
Temperature:25.3DEG
Operators:Zoe
Test Date:2023-1-12

g Range: 0 - 180DEG
Interval: 1.0DEG
Test System:EVERFINE GO-SPEX500_V1 SYSTEM V2.00.416
Humidity:65.0%
Test Distance:3.160m [K=1.0000]
Remarks: LAMP:CLU028-1204C4-303H5M3-F1 Ra:90
REFLECTOR:AP-060C-WW
DRIVER:PRO-UA430 700mA
30minutes warm-up